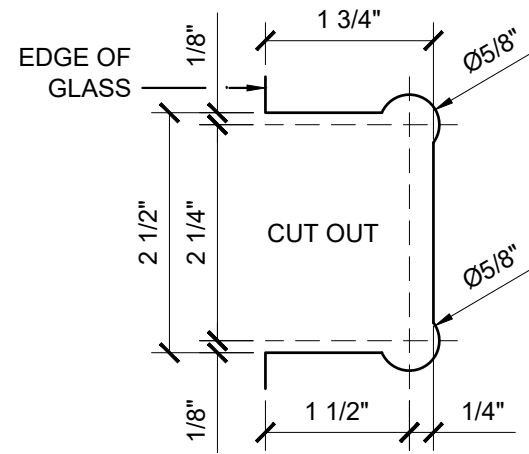
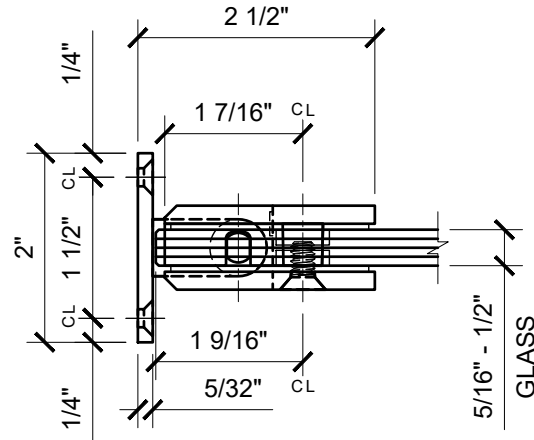


USE OF GASKETS

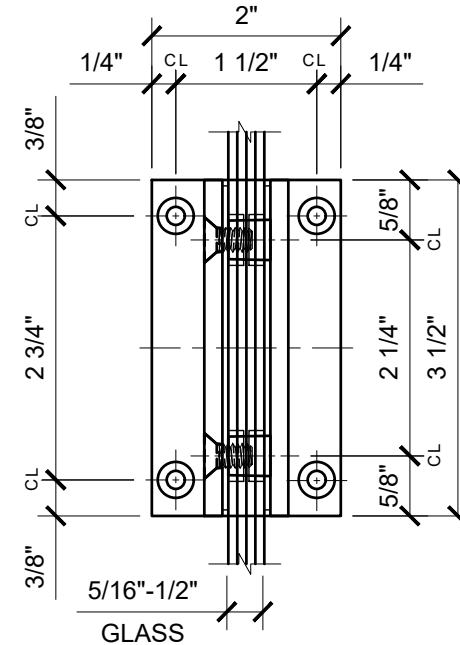
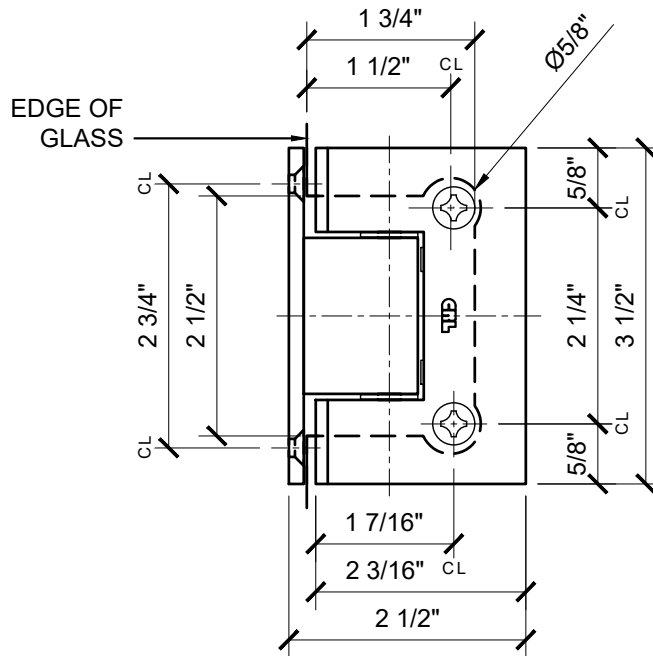
FOR 5/16" (8mm) GLASS: USE ONE THICK GASKET ON EACH SIDE

FOR 3/8" (10mm) GLASS: USE ONE THICK GASKET ON EACH SIDE

FOR 1/2" (12mm) GLASS: USE ONE THIN GASKET ON EACH SIDE



GLASS FABRICATION TEMPLATE



CATALOG NUMBER	FINISH
GEN037CH	CHROME
GEN037BR	BRASS
GEN0370RB	OIL RUBBED BRONZE
GEN037ABCO	ANTIQUE BRUSHED COPPER
GEN037ABL	ALL BLACK
GEN037ABN	ANTIQUE BRUSHED NICKEL
GEN037ABR	ANTIQUE BRASS
GEN037ABRZ	ANTIQUE BRONZE
GEN037AW	ALL WHITE
GEN037BBRZ	BRUSHED BRONZE
GEN037BN	BRUSHED NICKEL
GEN037BSC	BRUSHED SATIN CHROME
GEN037CBA	CHROME W/ BRASS ACCENTS
GEN037GP	GOLD PLATED
GEN037PC0	POLISHED COPPER
GEN037PN	POLISHED NICKEL
GEN037SB	SATIN BRASS
GEN037SC	SATIN CHROME
GEN037SN	SATIN NICKEL
GEN037UBR	ULTRA BRASS
GEN037WC	WHITE W/ CHROME ACCENTS

GEN037XX - CRL GENEVA SERIES WALL MOUNT FULL BACK PLATE HINGE

DATE: 7/7/17
SCALE: 6"=1'-0"
DRAWN BY: VM

DESCRIPTION: CRL GEN037

GENEVA WALL MOUNT HINGE

C.R.LAURENCE CO. ARCHITECTURAL PRODUCTS
2503 E. Vernon Avenue, Los Angeles, C.A 90058-1897
PH (800)-421-6144 FX: 800-587-7501 www.crlaurence.com

